

# tennsco Steel Lockers & Workbenches



## **General Services Administration Authorized Federal Supply Schedule Price List**

Tennsco Corporation  
P.O. Box 1888  
Dickson, TN 37056-1888  
Phone: 800-251-8184  
Fax: 800-722-0134

**GSA Contract #:** GS-27F-5024C  
**Duns Number:** 004035853  
**Tax ID #:** 62-064-9819  
**Cage Code:** 0K6D4

### **Standard Color Finishes**

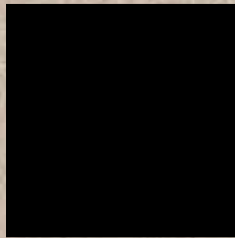
Depending on the product line, you may choose from among the following finishes.  
Check individual catalog pages for color availability.



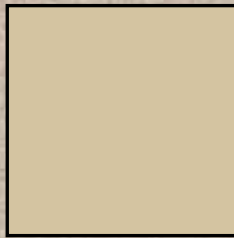
**Light Grey**



**Medium Grey**



**Black**



**Champagne/  
Putty**



**Sand**

Finishes shown above are only representative of the actual finishes. If greater accuracy is required contact your local Tennsco dealer for additional information.

### **A WORD ABOUT TENNSCO**

Tennsco Corp., headquartered in Dickson, Tennessee, began operations in 1962. Today, Tennsco is an industry leader with over 1.4 million square feet of manufacturing and warehouse space in six facilities. Tennsco offers a wide variety of filing and storage systems, steel office furniture, industrial and institutional shelving, lockers and shop equipment.

# CONTENTS:

Single Tier Steel Lockers	4
Double Tier Steel Lockers	5
Box Lockers	6
3, 4, 15 & 16-Person Box Lockers	7
Ventilated Steel Lockers	8
C-Thru Steel Lockers	9
Steel Locker Accessories	10
ADA Compliant Lockers	11
Mobile Workbenches	12-13
Workbenches: Steel, Solid Hard Wood, Compressed Wood & Plastic Laminate Tops	14
Workbenches: Adjustable Leg Workbenches	15
Workbenches: Electronic Workbenches	16
Electronic Modular Workbenches	17
Workbenches: Tops with Stringer	18
Workbench Accessories	19-22
Technical Workstations	23

## General Services Administration Federal Supply Service

### Authorized Federal Supply Schedule Price List

(On-Line access to contract ordering information, terms and conditions, up-to-date pricing, and the option to create an electronic delivery order are available through GSA Advantage, a menu driven database schedule. The internet address for GSA Advantage is <http://www.GSAAdvantage.gov>)

### FSC Group 711, Part III, Special Use Furniture FSC Class 7110

**Contract# GS-27F-5024C** For more information on ordering from Federal Supply Schedule click on the FSS button at <http://www.fss.gsa.gov> Effective: April 1, 2009 through July 31, 2014

### Contractor:

Tennsco Corp., P.O. Box 1888, 201 Tennsco Drive, Dickson, TN 37056-1888  
Phone: 615.446.8000 Fax: 615.446.7224 Email: [info@tennsco.com](mailto:info@tennsco.com)  
Web Address: [www.tennsco.com](http://www.tennsco.com)

### Special Item Numbers:

71-309 Clothing Locker  
71-310 Workbenches

### Maximum Order:

\$250,000.00 (SIN) 71-309 per single order  
\$1,000,000.00 (SIN) 71-310 per single order

### Minimum Order: \$100.00

### Geographic Coverage (For Mandatory Users):

The geographic coverage for this contract is the 48 contiguous states and the District of Columbia

### Point of Production: Dickson, Tennessee, USA • (Dickson County)

### Discounts From List Prices:

Order Size (List)	Discount from List
\$0 – \$2,000.	49.5%
\$2,001 – \$20,000	53.0%
Over \$20,001	55.325%

### Volume Discounts (Applied after Gov't discount is taken):

Order Size (List)	Discount from List
\$100,00 – \$150,000	3.0%
\$150,001 – \$300,000	4.0%

### Prompt Payment Terms: Net 30 Days

**GOVERNMENT CREDIT CARDS ARE ACCEPTED  
UP TO THE MICRO-PURCHASE THRESHOLD**

### ALL PRODUCTS ARE MADE IN THE USA

### GSA Advantage:

Internet World Wide Web Home Page Address: <http://www.gsa.gov>

**Time of Delivery:**  
30-120 Days A.R.O.

### Expedited Delivery

A shipment may be available for expected delivery; please contact ordering address at time of order.

### F.O.B. Point: Origin, Dickson, TN - Freight Prepaid and Added to Invoice

### Ordering Address:

Tennsco Corp.  
P.O. Box 1888  
Dickson, TN 37056-1888  
Phone: (Customer Service) 866.446.8686  
Fax: (Orders) 866.864.4796

### Payment Address

Tennsco Corp.  
P.O. Box 440307  
Nashville, TN 37244-0307

### DUNS NUMBER: 004035853

TENNSCO is registered in the CCR database.

### Restocking Fee/Return Policy:

Notice of returns must be given in writing. A restocking fee charge will not exceed 25% of the net cost for items returned. The customer must also pay for the cost of freight.

### Cancellation Policy:

No charge prior to production. After production has begun, only cost incurred that Tennsco can demonstrate will be billed to the customer if merchandise cannot be resold within (6) months.

### Warranty:

Tennsco's Standard Commercial Warranty warrants goods purchased hereunder to be free of defects in materials and workmanship for a period of one (1) year from the date of shipment, hereunder. We offer no warranty on upholstery materials other than those guarantees implied by the material manufacturer. Tennsco's warranty shall not apply in the event goods are damaged as a result of misuse, abuse, neglect, accident, improper application, modification or repair by persons not authorized by Seller, where goods are damaged during shipment, or where the date stamps on the goods have been defaced, modified or removed. UNLESS CONSIDERED UNENFORCEABLE OR UNLAWFUL UNDER APPLICABLE LAW:

- ALL IMPLIED WARRANTIES, INCLUDING BUT NOT LIMITED TO WARRANTIES OR MERCHANT ABILITY AND FITNESS FOR A PARTICULAR PURPOSE ARE HEREBY EXCLUDED:
- BUYERS REMEDY, IF ANY, FOR ANY DEFECTIVE GOODS SHALL BE LIMITED TO A REFUND BY SELLER OR REPLACEMENT OF THE GOODS AT SELLER'S OPTION, AND SHALL IN NO EVENT INCLUDE DAMAGES OF ANY KIND, WHETHER INCIDENTAL, CONSEQUENTIAL OR OTHERWISE.

NO GOODS ACCEPTED FOR RETURN WITHOUT PRIOR APPROVAL. Seller shall have the right to inspect any goods claimed to be defective at Buyer's place of business or require Buyer to return the goods to Seller for inspection on Seller's premises. Transportation charges covering returned goods will be borne by Seller only if such goods are proven to be defective, are covered by this warranty and are returned within the warranty period stated above.

# tennsco Steel Lockers: Single Tier

Single Tier lockers are roomy enough for just about any secured storage application. Tennsco's Single Tier lockers are the most popular general purpose locker in factories, schools, hospitals, and other locations where coats and clothing are stored.

**Please Note**  
Standard Colors: Black, Champagne/Putty, Light Grey, Medium Grey, Sand



ASSEMBLED			UNASSEMBLED			Openings	Opening			Overall Unit		
Cat. No.	Unit Wt.	Unit Price	Cat. No.	Unit Wt.	Unit Price		W	D	H	W	D	H
<b>With Legs</b>												
STS-121260-1	53	\$311.00	STK-121260-1	58	\$267.00	1	12	12	60	12	12	66
-	-	-	STK-121260-3	133	610.00	3	12	12	60	36	12	66
STS-121560-1	67	321.00	STK-121560-1	61	282.00	1	12	15	60	12	15	66
STS-121560-3	158	758.00	STK-121560-3	156	651.00	3	12	15	60	36	15	66
STS-121860-1	68	333.00	STK-121860-1	68	290.00	1	12	18	60	12	18	66
STS-121860-3	175	872.00	STK-121860-3	165	689.00	3	12	18	60	36	18	66
STS-151560-1	75	366.00	STK-151560-1	73	318.00	1	15	15	60	15	15	66
STS-151560-3	189	929.00	STK-151560-3	180	734.00	3	15	15	60	45	15	66
STS-151860-1	77	360.00	STK-151860-1	74	316.00	1	15	18	60	15	18	66
STS-151860-3	192	905.00	STK-151860-3	183	762.00	3	15	18	60	45	18	66
STS-121272-1	72	340.00	STK-121272-1	66	275.00	1	12	12	72	12	12	78
STS-121272-3	159	848.00	STK-121272-3	169	653.00	3	12	12	72	36	12	78
STS-121572-1	65	352.00	STK-121572-1	70	285.00	1	12	15	72	12	15	78
STS-121572-3	163	825.00	STK-121572-3	166	695.00	3	12	15	72	36	15	78
STS-121872-1	70	363.00	STK-121872-1	66	295.00	1	12	18	72	12	18	78
STS-121872-3	176	856.00	STK-121872-3	177	726.00	3	12	18	72	36	18	78
STS-151572-1	86	404.00	STK-151572-1	74	321.00	1	15	15	72	15	15	78
STS-151572-3	217	993.00	STK-151572-3	191	823.00	3	15	15	72	45	15	78
STS-151872-1	76	397.00	STK-151872-1	75	321.00	1	15	18	72	15	18	78
STS-151872-3	196	968.00	STK-151872-3	194	823.00	3	15	18	72	45	18	78
STS-182172-1	87	469.00	STK-182172-1	101	442.00	1	18	21	72	18	21	78
STS-182172-2	190	919.00	-	-	-	2	18	21	72	36	21	78
-	-	-	STK-182172-3	243	955.00	3	18	21	72	54	21	78
STS-242472-1	123	551.00	-	-	-	1	24	24	72	24	24	78
<b>Without Legs</b>												
STS-121260-A	51	298.00	STK-121260-A	56	270.00	1	12	12	60	12	12	60
-	-	-	STK-121260-C	142	600.00	3	12	12	60	36	12	60
STS-121560-A	62	308.00	STK-121560-A	56	278.00	1	12	15	60	12	15	60
STS-121560-C	153	771.00	STK-121560-C	152	647.00	3	12	15	60	36	15	60
STS-121860-A	67	321.00	STK-121860-A	64	288.00	1	12	18	60	12	18	60
STS-121860-C	169	778.00	STK-121860-C	158	681.00	3	12	18	60	36	18	60
STS-151560-A	71	363.00	STK-151560-A	70	325.00	1	15	15	60	15	15	60
STS-151560-C	180	920.00	STK-151560-C	178	805.00	3	15	15	60	45	15	60
STS-151860-A	75	350.00	STK-151860-A	74	316.00	1	15	18	60	15	18	60
STS-151860-C	186	872.00	STK-151860-C	179	761.00	3	15	18	60	45	18	60
STS-121272-A	68	327.00	STK-121272-A	64	271.00	1	12	12	72	12	12	72
STS-121272-C	153	844.00	STK-121272-C	165	642.00	3	12	12	72	36	12	72
STS-121572-A	63	338.00	STK-121572-A	68	281.00	1	12	15	72	12	15	72
STS-121572-C	157	804.00	STK-121572-C	175	685.00	3	12	15	72	36	15	72
STS-121872-A	68	347.00	STK-121872-A	74	292.00	1	12	18	72	12	18	72
STS-121872-C	170	826.00	STK-121872-C	187	716.00	3	12	18	72	36	18	72
STS-151572-A	86	393.00	STK-151572-A	80	330.00	1	15	15	72	15	15	72
STS-151572-C	212	979.00	STK-151572-C	206	849.00	3	15	15	72	45	15	72
STS-151872-A	74	382.00	STK-151872-A	80	318.00	1	15	18	72	15	18	72
STS-151872-C	190	944.00	STK-151872-C	206	822.00	3	15	18	72	45	18	72
STS-182172-A	85	456.00	STK-182172-A	96	429.00	1	18	21	72	18	21	72
STS-182172-B	181	888.00	-	-	-	2	18	21	72	36	21	72
-	-	-	STK-182172-C	239	945.00	3	18	21	72	54	21	72
STS-242472-A	119	535.00	-	-	-	1	24	24	72	24	24	72

National Motor Freight classification: Class 70 KD; 125 Set up  
Locker Accessories are located on page 9

# tennsco Steel Lockers: Double Tier

Tennsco's *Double Tiered* lockers feature two openings per locker, giving you twice as many lockers in the same space, yet providing plenty of hanging room for shirts and jackets. Perfect for the gym or health club!

### Please Note

Standard Colors: Black, Champagne/Putty, Light Grey, Medium Grey, Sand



ASSEMBLED			UNASSEMBLED			Openings	Opening			Overall Unit		
Cat. No.	Unit Wt.	Unit Price	Cat. No.	Unit Wt.	Unit Price		W	D	H	W	D	H
<b>With Legs</b>												
DTS-121230-1	53	<b>\$342.00</b>	DTK-121230-1	59	<b>\$291.00</b>	2	12	12	30	12	12	66
DTS-121230-3	136	<b>844.00</b>	DTK-121230-3	150	<b>692.00</b>	6	12	12	30	36	12	66
DTS-121530-1	68	<b>354.00</b>	DTK-121530-1	62	<b>300.00</b>	2	12	15	30	12	15	66
DTS-121530-3	162	<b>879.00</b>	DTK-121530-3	158	<b>725.00</b>	6	12	15	30	36	15	66
DTS-121830-1	69	<b>362.00</b>	DTK-121830-1	69	<b>308.00</b>	2	12	18	30	12	18	66
DTS-121830-3	177	<b>901.00</b>	DTK-121830-3	167	<b>780.00</b>	6	12	18	30	36	18	66
DTS-151530-1	85	<b>392.00</b>	DTK-151530-1	71	<b>334.00</b>	2	15	15	30	15	15	66
DTS-151530-3	203	<b>991.00</b>	DTK-151530-3	179	<b>857.00</b>	6	15	15	30	45	15	66
DTS-151830-1	80	<b>390.00</b>	DTK-151830-1	74	<b>329.00</b>	2	15	18	30	15	18	66
DTS-151830-3	194	<b>998.00</b>	DTK-151830-3	185	<b>846.00</b>	6	15	18	30	45	18	66
DTS-121236-1	63	<b>359.00</b>	DTK-121236-1	66	<b>293.00</b>	2	12	12	36	12	12	78
DTS-121236-3	161	<b>845.00</b>	DTK-121236-3	159	<b>707.00</b>	6	12	12	36	36	12	78
DTS-121536-1	67	<b>372.00</b>	DTK-121536-1	73	<b>303.00</b>	2	12	15	36	12	15	78
DTS-121536-3	168	<b>883.00</b>	DTK-121536-3	167	<b>753.00</b>	6	12	15	36	36	15	78
DTS-121836-1	70	<b>379.00</b>	DTK-121836-1	67	<b>313.00</b>	2	12	18	36	12	18	78
DTS-121836-3	177	<b>899.00</b>	DTK-121836-3	177	<b>782.00</b>	6	12	18	36	36	18	78
DTS-151536-1	89	<b>427.00</b>	DTK-151536-1	85	<b>339.00</b>	2	15	15	36	15	15	78
DTS-151536-3	227	<b>1,068.00</b>	DTK-151536-3	221	<b>897.00</b>	6	15	15	36	45	15	78
DTS-151836-1	77	<b>426.00</b>	DTK-151836-1	85	<b>345.00</b>	2	15	18	36	15	18	78
DTS-151836-3	196	<b>1,072.00</b>	DTK-151836-3	195	<b>874.00</b>	6	15	18	36	45	18	78
<b>Without Legs</b>												
DTS-121230-A	51	<b>329.00</b>	DTK-121230-A	57	<b>286.00</b>	2	12	12	30	12	12	60
DTS-121230-C	130	<b>794.00</b>	DTK-121230-C	146	<b>685.00</b>	6	12	12	30	36	12	60
DTS-121530-A	63	<b>341.00</b>	DTK-121530-A	59	<b>297.00</b>	2	12	15	30	12	15	60
DTS-121530-C	156	<b>843.00</b>	DTK-121530-C	154	<b>717.00</b>	6	12	15	30	36	15	60
DTS-121830-A	67	<b>349.00</b>	DTK-121830-A	68	<b>306.00</b>	2	12	18	30	12	18	60
DTS-121830-C	171	<b>878.00</b>	DTK-121830-C	163	<b>773.00</b>	6	12	18	30	36	18	60
DTS-151530-A	71	<b>374.00</b>	DTK-151530-A	70	<b>325.00</b>	2	15	15	30	15	15	60
DTS-151530-C	183	<b>971.00</b>	DTK-151530-C	181	<b>846.00</b>	6	15	15	30	45	15	60
DTS-151830-A	77	<b>377.00</b>	DTK-151830-A	75	<b>327.00</b>	2	15	18	30	15	18	60
DTS-151830-C	193	<b>968.00</b>	DTK-151830-C	187	<b>802.00</b>	6	15	18	30	45	18	60
DTS-121236-A	61	<b>344.00</b>	DTK-121236-A	68	<b>288.00</b>	2	12	12	36	12	12	72
DTS-121236-C	155	<b>841.00</b>	DTK-121236-C	175	<b>701.00</b>	6	12	12	36	36	12	72
DTS-121536-A	65	<b>358.00</b>	DTK-121536-A	72	<b>301.00</b>	2	12	15	36	12	15	72
DTS-121536-C	162	<b>866.00</b>	DTK-121536-C	186	<b>744.00</b>	6	12	15	36	36	15	72
DTS-121836-A	68	<b>363.00</b>	DTK-121836-A	78	<b>310.00</b>	2	12	18	36	12	18	72
DTS-121836-C	171	<b>873.00</b>	DTK-121836-C	170	<b>774.00</b>	6	12	18	36	36	18	72
DTS-151536-A	89	<b>414.00</b>	DTK-151536-A	85	<b>338.00</b>	2	15	15	36	15	15	72
DTS-151536-C	222	<b>1,044.00</b>	DTK-151536-C	221	<b>849.00</b>	6	15	15	36	45	15	72
DTS-151836-A	71	<b>418.00</b>	DTK-151836-A	84	<b>341.00</b>	2	15	18	36	15	18	72
DTS-151836-C	190	<b>1,040.00</b>	DTK-151836-C	195	<b>875.00</b>	6	15	18	36	45	18	72

National Motor Freight classification: Class 70 KD; 125 Set up  
Locker Accessories are located on page 9

# tennsco Steel Lockers: Box Lockers

Box Lockers are ideal for securely storing smaller items like purses, lunches, books and athletic gear. The efficient five and six tier configurations give schools, clubs, and hospitals the necessary storage capabilities without taking up valuable floor space.

### Please Note

Standard Colors: Black, Champagne/Putty, Light Grey, Medium Grey, Sand



## Box Lockers

ASSEMBLED			UNASSEMBLED			Openings	Opening			Overall Unit		
Cat. No.	Unit Wt.	Unit Price	Cat. No.	Unit Wt.	Unit Price		W	D	H	W	D	H
<b>5 Tier High With Legs</b>												
BS5-121212-1	64	\$413.00	BK5-121212-1	57	\$264.00	5	12	12	12	12	12	66
BS5-121212-3	155	815.00	BK5-121212-3	148	636.00	15	12	12	12	36	12	66
BS5-121512-1	57	404.00	BK5-121512-1	61	277.00	5	12	15	12	12	15	66
BS5-121512-3	145	825.00	BK5-121512-3	146	665.00	15	12	15	12	36	15	66
BS5-121812-1	61	409.00	BK5-121812-1	70	288.00	5	12	18	12	12	18	66
BS5-121812-3	155	867.00	BK5-121812-3	168	692.00	15	12	18	12	36	18	66
BS5-151512-1	67	474.00	BK5-151512-1	64	331.00	5	15	15	12	15	15	66
BS5-151512-3	172	1,155.00	BK5-151512-3	161	821.00	15	15	15	12	45	15	66
BS5-151812-1	80	478.00	BK5-151812-1	76	336.00	5	15	18	12	15	18	66
BS5-151812-3	198	1,186.00	BK5-151812-3	189	844.00	15	15	18	12	45	18	66
<b>5 Tier High Without Legs</b>												
BS5-121212-A	60	400.00	BK5-121212-A	55	258.00	5	12	12	12	12	12	60
BS5-121212-C	144	734.00	BK5-121212-C	144	626.00	15	12	12	12	36	12	60
BS5-121512-A	55	404.00	BK5-121512-A	58	271.00	5	12	15	12	12	15	60
BS5-121512-C	139	767.00	BK5-121512-C	151	650.00	15	12	15	12	36	15	60
BS5-121812-A	59	406.00	BK5-121812-A	67	282.00	5	12	18	12	12	18	60
BS5-121812-C	149	844.00	BK5-121812-C	164	676.00	15	12	18	12	36	18	60
BS5-151512-A	67	517.00	BK5-151512-A	62	325.00	5	15	15	12	15	15	60
BS5-151512-C	198	1,133.00	BK5-151512-C	176	811.00	15	15	15	12	45	15	60
BS5-151812-A	76	474.00	BK5-151812-A	71	330.00	5	15	18	12	15	18	60
BS5-151812-C	198	1,153.00	BK5-151812-C	189	832.00	15	15	18	12	45	18	60
<b>6 Tier High With Legs</b>												
BS6-121212-1	68	435.00	BK6-121212-1	67	290.00	6	12	12	12	12	12	78
BS6-121212-3	155	952.00	BK6-121212-3	175	723.00	18	12	12	12	36	12	78
BS6-121512-1	66	452.00	BK6-121512-1	72	304.00	6	12	15	12	12	15	78
BS6-121512-3	166	965.00	BK6-121512-3	186	754.00	18	12	15	12	36	15	78
BS6-121812-1	72	390.00	BK6-121812-1	71	318.00	6	12	18	12	12	18	78
BS6-121812-3	182	983.00	BK6-121812-3	200	787.00	18	12	18	12	36	18	78
BS6-151512-1	91	444.00	BK6-151512-1	85	361.00	6	15	15	12	15	15	78
BS6-151512-3	228	1,164.00	BK6-151512-3	222	931.00	18	15	15	12	45	15	78
BS6-151812-1	91	540.00	BK6-151812-1	85	367.00	6	15	18	12	15	18	78
BS6-151812-3	228	1,359.00	BK6-151812-3	222	952.00	18	15	18	12	45	18	78
<b>6 Tier High Without Legs</b>												
BS6-121212-A	67	421.00	BK6-121212-A	65	285.00	6	12	12	12	12	12	72
BS6-121212-C	147	919.00	BK6-121212-C	171	713.00	18	12	12	12	36	12	72
BS6-121512-A	64	445.00	BK6-121512-A	70	299.00	6	12	15	12	12	15	72
BS6-121512-C	160	1,077.00	BK6-121512-C	183	742.00	18	12	15	12	36	15	72
BS6-121812-A	70	366.00	BK6-121812-A	77	312.00	6	12	18	12	12	18	72
BS6-121812-C	176	965.00	BK6-121812-C	197	775.00	18	12	18	12	36	18	72
BS6-151512-A	91	444.00	BK6-151512-A	85	356.00	6	15	15	12	15	15	72
BS6-151512-C	228	1,309.00	BK6-151512-C	222	920.00	18	15	15	12	45	15	72
BS6-151812-A	89	536.00	BK6-151812-A	85	363.00	6	15	18	12	15	18	72
BS6-151812-C	222	1,332.00	BK6-151812-C	219	941.00	18	15	18	12	45	18	72

# tennsco 3, 4, 15 & 16-Person Box Lockers

Box Lockers are ideal for securely storing smaller items like purses, lunches, books and athletic gear. The efficient five and six tier configurations give schools, clubs, and hospitals the necessary storage capabilities without taking up valuable floor space.

### Please Note

Standard Colors: Black, Champagne/Putty, Light Grey, Medium Grey, Sand



## 3, 4, 15 & 16-Person Box Lockers

Assembled/Unassembled	Cat. No.	Openings	Opening			Overall Unit			Wt.	List Price
			W	D	H	W	D	H		
<b>3-Person Wall Mounted Box Lockers</b>										
Assembled*	BS1-121812-3	3	-	-	-	36	18	12	43	<b>\$364.00</b>
<b>4-Person Wall Mounted Box Lockers</b>										
Assembled*	BS1-121812-4	4	-	-	-	48	18	12	55	<b>\$390.00</b>
<b>15-Person Box Lockers With Legs</b>										
Assembled*	SRS-601878-1	15	12	18	12	60	18	78	185	<b>1,113.00</b>
<b>15-Person Box Lockers Without Legs</b>										
Assembled*	SRS-601872-A	15	12	18	12	60	18	72	185	<b>1,077.00</b>
<b>16-Person Box Lockers With Legs</b>										
Assembled*	SRS-721878-1	16	12	18	12	72	18	78	194	<b>1,161.00</b>
Unassembled	SRK-721878-1	16	12	18	12	72	18	78	187	<b>878.00</b>
<b>16-Person Box Lockers Without Legs</b>										
Assembled*	SRS-721872-A	16	12	18	12	72	18	72	190	<b>1,147.00</b>
Unassembled	SRK-721872-A	16	12	18	12	72	18	72	183	<b>861.00</b>

\* Center section and coat rod to be attached in field.

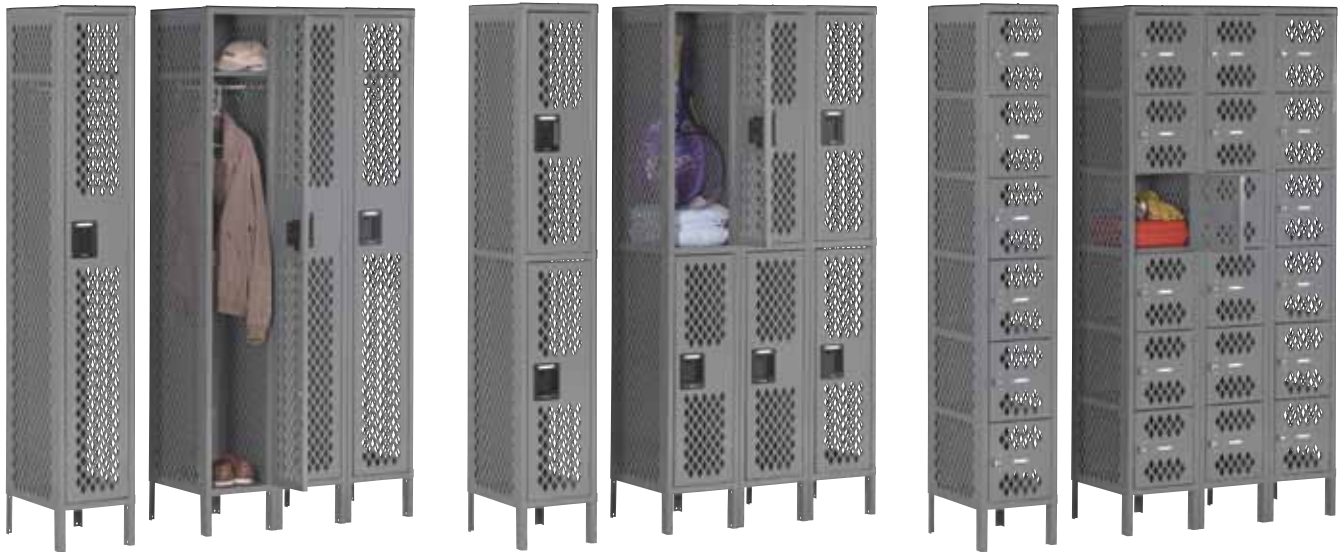
National Motor Freight classification: Class 70 KD; 125 Set up  
Locker Accessories are located on page 9

# tennsco Steel Lockers: Ventilated Steel Lockers

Ventilated Steel Lockers feature three-sided locker ventilation, which offers continuous airflow to help prevent odor causing bacteria. The specially designed diamond-shaped ventilation slots allow clear visibility to locker interior making it easy to identify undesirable contents. Ventilated Lockers also offer all welded construction, smooth operating latching mechanism and are available with and without legs.

### Please Note

Standard Colors: Black, Champagne/Putty, Light Grey, Medium Grey, Sand



## Ventilated Steel Lockers

- No assembly required.

Cat. No.	Description	Wt.	List Price
<b>Single Tier</b>			
VSL-121872-1	w/legs, battery of 1 wide	79	<b>\$478.00</b>
VSL-121872-3	w/legs, battery of 3 wide	237	<b>1,103.00</b>
VSL-121872-A	no legs, battery of 1 wide	77	<b>468.00</b>
VSL-121872-C	no legs, battery of 3 wide	233	<b>1,083.00</b>
VSL-151872-1	w/legs, battery of 1 wide	118.5	<b>518.00</b>
VSL-151872-3	w/legs, battery of 3 wide	260	<b>1,247.00</b>
VSL-151872-A	no legs, battery of 1 wide	118.5	<b>513.00</b>
VSL-151872-C	no legs, battery of 3 wide	260	<b>1,225.00</b>
VSL-181872-1	w/legs, battery of 1 wide	118.5	<b>580.00</b>
VSL-181872-2	w/legs, battery of 2 wide	237	<b>1,028.00</b>
VSL-181872-A	no legs, battery of 1 wide	118.5	<b>577.00</b>
VSL-181872-B	no legs, battery of 2 wide	237	<b>1,020.00</b>
<b>Double Tier</b>			
VDL-121836-1	w/legs, battery of 1 wide	80	<b>506.00</b>
VDL-121836-3	w/legs, battery of 3 wide	240	<b>1,199.00</b>
VDL-121836-A	no legs, battery of 1 wide	78	<b>507.00</b>
VDL-121836-C	no legs, battery of 3 wide	238	<b>1,180.00</b>
VDL-151836-1	w/legs, battery of 1 wide	90	<b>564.00</b>
VDL-151836-3	w/legs, battery of 3 wide	240	<b>1,368.00</b>
VDL-151836-A	no legs, battery of 1 wide	90	<b>560.00</b>
VDL-151836-C	no legs, battery of 3 wide	240	<b>1,348.00</b>
<b>6-High Box Lockers</b>			
VBL6-1218-1	w/legs, battery of 1 wide	82	<b>600.00</b>
VBL6-1218-3	w/legs, battery of 3 wide	205	<b>1,429.00</b>
VBL6-1218-A	no legs, battery of 1 wide	80	<b>589.00</b>
VBL6-1218-C	no legs, battery of 3 wide	203	<b>1,405.00</b>

National Motor Freight classification: Class 125  
Locker Accessories are located on page 9



# tennsco Steel Lockers: C-Thru Lockers

Tennsco *C-Thru Lockers* are the perfect solution for viewing the contents of lockers without violating people's privacy in schools, industrial applications, airports, prisons and more where concealed belongings need to be scrutinized. Tennsco *C-Thru Lockers* feature heavy duty steel construction with visual door panels and vandal-resistant handles for secure storage of clothing and personal belongings.

### Please Note

Standard Colors: Black, Champagne/Putty, Light Grey, Medium Grey, Sand



## C-Thru Lockers

Cat. No.	W	D	H	Wt.	List Price
<b>Single Tier C-Thru Lockers</b>					
CSL-121272-1	12	12	78	69	<b>\$446.00</b>
CSL-121272-3	36	12	78	173	<b>1,062.00</b>
CSL-121572-1	12	15	78	73	<b>457.00</b>
CSL-121572-3	36	15	78	171	<b>1,089.00</b>
CSL-121872-1	12	18	78	75	<b>469.00</b>
CSL-121872-3	36	18	78	195	<b>1,120.00</b>
CSL-151872-1	15	18	78	84	<b>541.00</b>
CSL-151872-3	45	18	78	214	<b>1,331.00</b>
<b>Double Tier C-Thru Lockers</b>					
CDL-121236-1	12	12	78	73	<b>516.00</b>
CDL-121236-3	36	12	78	184	<b>1,275.00</b>
CDL-121536-1	12	15	78	77	<b>530.00</b>
CDL-121536-3	36	15	78	183	<b>1,309.00</b>
CDL-121836-1	12	18	78	71	<b>537.00</b>
CDL-121836-3	36	18	78	206	<b>1,328.00</b>
CDL-151836-1	15	18	78	89	<b>575.00</b>
CDL-151836-3	45	18	78	225	<b>1,439.00</b>
<b>6 High Box C-Thru Lockers</b>					
CBL6-121212-1	12	12	78	58	<b>404.00</b>
CBL6-121212-3	36	12	78	163	<b>1,074.00</b>
CBL6-121512-1	12	15	78	63	<b>422.00</b>
CBL6-121512-3	36	15	78	164	<b>1,087.00</b>
CBL6-121812-1	12	18	78	65	<b>442.00</b>
CBL6-121812-3	36	18	78	191	<b>1,159.00</b>

Note: All C-Thru lockers are available without legs. Call Tennsco for pricing.

# tennsco Steel Locker Accessories

All Tennsco *Steel Lockers* offer a variety of accessories to be configured to meet your needs. Locker Benches are available and feature a clear lacquer finish on 1 1/4" thick laminated maple top. Combination and Manual Locking options provide security and are virtually tamper-proof. Number/Name Plates provide order and a clean finished look *Sloping Tops* prevent unwanted clutter and are available in one wide and three wide units. Choose from *Front and Closed Locker Bases* that provide a flush, finished appearance.

### Please Note

Standard Colors: Black, Champagne/Putty, Light Grey, Medium Grey, Sand



- Assembly required.

### Locker Bench

Cat. No.	W	D	H	Wt.	List Price
HMLB-36	36	9 1/2	1 1/4	12	<b>\$93.00</b>
HMLB-48	48	9 1/2	1 1/4	16	<b>124.00</b>
HMLB-60	60	9 1/2	1 1/4	20	<b>152.00</b>
HMLB-72	72	9 1/2	1 1/4	24	<b>183.00</b>
HMLB-84	84	9 1/2	1 1/4	28	<b>213.00</b>
HMLB-96	96	9 1/2	1 1/4	32	<b>249.00</b>
HMLB-108	108	9 1/2	1 1/4	36	<b>285.00</b>
HMLB-120	120	9 1/2	1 1/4	40	<b>317.00</b>
HMLB-132	132	9 1/2	1 1/4	44	<b>356.00</b>
HMLB-144	144	9 1/2	1 1/4	48	<b>396.00</b>
LBP-1	Bench Pedestal (16 1/4" D)			8.5	<b>54.00</b>

Note: Must order bench pedestal separately. Use three pedestals for benches 108" to 144".



### Sloping Tops

- Assembly required.

Cat. No.	W	D	H	Wt.	List Price
<b>Sloping Top - One Wide</b>					
KST-1212	12	12	-	3.6	<b>\$40.00</b>
KST-1215	12	15	-	4.3	<b>42.00</b>
KST-1218	12	18	-	5	<b>45.00</b>
KST-1518	15	18	-	5.5	<b>48.00</b>
KST-1521	15	21	-	7.6	<b>59.00</b>
KST-1821	18	21	-	7.9	<b>61.00</b>
KST-2424	24	24	-	9.1	<b>105.00</b>
<b>Sloping Top - Three Wide</b>					
KST-3612	36	12	-	7.7	<b>56.00</b>
KST-3615	36	15	-	9	<b>65.00</b>
KST-3618	36	18	-	10.1	<b>68.00</b>
KST-4518	45	18	-	13.4	<b>76.00</b>
KST-4521	45	21	-	15	<b>89.00</b>

### Locks



Cat. No.	Description	Wt.	List Price
<b>Grooved Key Locks</b>			
MAS-1710MK	Grooved Key Lock (Dead Bolt)	.4	<b>\$39.00</b>
<b>Combination Locks</b>			
MAS-1670	Dead Bolt (Master Keyed)	.5	<b>43.00</b>
MAS-1654	Spring Bolt (Master Keyed)	.5	<b>42.00</b>
<b>Combination Padlocks</b>			
MAS-1525	Combination (Master Keyed)	.5	<b>19.70</b>
MAS-1502	Combination (No Key)	.5	<b>13.70</b>



### Number/Name Plates

Cat. No.	W	H	Wt.	List Price	
LNP-3	Plastic	3 5/16	7/16	.01	<b>\$2.10</b>
LNP-A	Aluminum	2 7/16	3/4	.01	<b>1.50</b>



### Locker Bases

Cat. No.	W	D	H	Wt.	List Price
<b>Front Bases (for use on leg lockers)</b>					
FB-12	12	-	6	1.2	<b>\$7.50</b>
FB-15	15	-	6	1.7	<b>8.50</b>
FB-18	18	-	6	2	<b>10.20</b>
FB-24	24	-	6	2.8	<b>17.40</b>
<b>End Bases (for use on leg lockers)</b>					
EB-12	-	12	6	1.2	<b>14.00</b>
EB-15	-	15	6	1.4	<b>14.40</b>
EB-18	-	18	6	1.7	<b>15.20</b>
EB-21	-	21	6	2.4	<b>25.00</b>
EB-24	-	24	6	2.6	<b>26.00</b>
<b>Closed Locker Bases (for use on no leg lockers)</b>					
CLB-1212	12	12	6	7.4	<b>41.00</b>
CLB-1215	12	15	6	7.3	<b>43.00</b>
CLB-1218	12	18	6	7.7	<b>44.00</b>
CLB-1518	15	18	6	8.5	<b>56.00</b>
CLB-1521	15	21	6	11	<b>62.00</b>
<b>3 Wide Locker Bases (for use on no leg lockers)</b>					
CLB-3612	36	12	6	13.1	<b>67.00</b>
CLB-3615	36	15	6	16.3	<b>70.00</b>
CLB-3618	36	18	6	19.6	<b>68.00</b>
CLB-4512	45	12	6	16.3	<b>74.00</b>
CLB-4515	45	15	6	20	<b>78.00</b>
CLB-4518	45	18	6	24	<b>80.00</b>

# tennsco ADA Compliant Lockers

Tennsco ADA Compliant Lockers are specifically designed to provide easier access to contents from a seated position. This is achieved through your choice of a bottom riser to raise the lower shelf, and ADA compliant keyless lock, and reduced-height upper shelf and coathooks.

### Please Note

Standard Colors: Black, Champagne/Putty, Light Grey, Medium Grey, Sand



### ADA Compliant Lock

Cat. No.	Description	Wt.	List Price*
<b>ADA Compliant Lock**</b>			
ZEF-1730	Vertical Deadbolt W/Right Hinge	1.0	<b>\$58.00</b>
<b>Keys</b>			
ZEF-LK	Replacement User Key	0.2	<b>8.55</b>
ZEF-CK	Master Key	0.2	<b>8.55</b>

\* For factory-installed locks, add \$6.00 list PER OPENING to the cost of the lock.  
\*\*Lock comes standard with three user keys. Replacement keys sold individually.



### ADA Reduced Height Upper Shelf

Cat. No.	W	D	H	Wt.	List Price
ADALS-1212	12	12	-	2.9	<b>\$15.80</b>
ADALS-1215	12	15	-	3.3	<b>13.90</b>
ADALS-1218	12	18	-	3.9	<b>15.80</b>
ADALS-1518	15	18	-	4.6	<b>18.70</b>
ADALS-1521	15	21	-	5.2	<b>25.00</b>
ADALS-1524	15	24	-	5.8	<b>33.70</b>

Shelf includes three coat hooks. May require drilling for installation.



### ADA Sticker

Cat. No.	W	D	H	Wt.	List Price
ADA STK	2	-	2	.01	<b>\$5.90</b>

### ADA Reduced Bottom Riser

Cat. No.	W	D	H	Wt.	List Price
ADALSI-1212	12	12	-	2.9	<b>\$18.40</b>
ADALSI-1215	12	15	-	3.3	<b>19.70</b>
ADALSI-1218	12	18	-	3.8	<b>21.00</b>
ADALSI-1518	15	18	-	4.6	<b>22.00</b>
ADALSI-1521	15	21	-	5.2	<b>26.00</b>
ADALSI-1524	15	24	-	5.8	<b>28.00</b>

For adequate height, must be used only with lockers with legs, or with no-leg lockers installed on a closed base.

# tennsco Workbenches: Mobile Workbenches

Why let productivity suffer because fixed work benches are located elsewhere? Tennsco *Mobile Workbenches* keep employees productive on the factory floor. These tough mobile benches help your company's productivity by keeping employees organized no matter where they are on the factory floor. Designed to move heavy parts and tools to your worksite, Tennsco's *Mobile Workbenches* feature all welded construction from heavy gauge steel. They are available in one or four drawer configurations. Standard features include: locking cabinet with one cabinet shelf, two fixed and two swivel casters for easy steering.

**Please Note**

Standard Color: Medium Grey



**Mobile Workbench**

(With Modular Cabinet, One Drawer and Two Shelves)

- Assembly required.

Cat No.	W	D	H	Wt.	Load Capacity	List Price
<b>Mobile Workbench</b>						
MB-2-2542	42	25	36 <sup>1</sup> / <sub>4</sub>	157	1000	<b>\$782.00</b>
<b>Extra Shelf For Cabinet</b>						
MBS-2124	21	23	<sup>3</sup> / <sub>4</sub>	6.4	100	<b>38.00</b>
<b>Extra Shelf Left Side</b>						
MBS-1524	15	23	<sup>3</sup> / <sub>4</sub>	5	100	<b>34.00</b>

Note: Drawer capacity is 70 pounds.

National Motor Freight classification: Class 100



**Mobile Workbench**

(With Modular Cabinet and Four Drawers)

- Assembly required.

Cat No.	W	D	H	Wt.	Load Capacity	List Price
<b>Mobile Workbench</b>						
MB-1-2542	42	25	36 <sup>1</sup> / <sub>4</sub>	182	1000	<b>\$1,014.00</b>
<b>Extra Shelf For Cabinet</b>						
MBS-2124	21	23	<sup>3</sup> / <sub>4</sub>	6.4	100	<b>38.00</b>

Note: Drawer capacity is 70 pounds.

# tennsco Workbenches: Mobile Workbenches

Tennsco *Mobile Workbenches* offer a variety of configurations all on easy to push rubber wheels. Your employees will save time and energy throughout the day.

Choose the configuration that offers the right storage and organization for a jump in productivity and employee satisfaction.

### Please Note

Standard Color: Medium Grey

## 33" Wide Configurations



MB-2530-BB



MB-2530-C

## 48" Wide Configurations



MB-3-2545



MB-4-2545



MB-5-2545



MB-6-2545



MB-7-2545

### Workbench Configurations

- Assembly required.

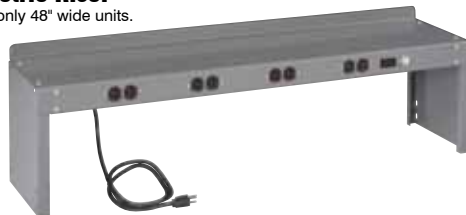
Cat No.	W	D	H	Wt.	List Price
MB-2530-BB	33	25	43	234	<b>\$1,153.00</b>
MB-2530-C	33	25	43	153	<b>748.00</b>
MB-3-2545	48	25	43	294	<b>1,638.00</b>
MB-4-2545	48	25	43	270	<b>1,330.00</b>
MB-5-2545	48	25	43	220	<b>1,457.00</b>
MB-6-2545	48	25	43	251	<b>1,375.00</b>
MB-7-2545	48	25	43	278	<b>1,716.00</b>

National Motor Freight classification: Class 100

## Mobile Workbench Accessories

### Electric Riser

Fits only 48" wide units.



### Push Handle Power Strip



- Assembly required.

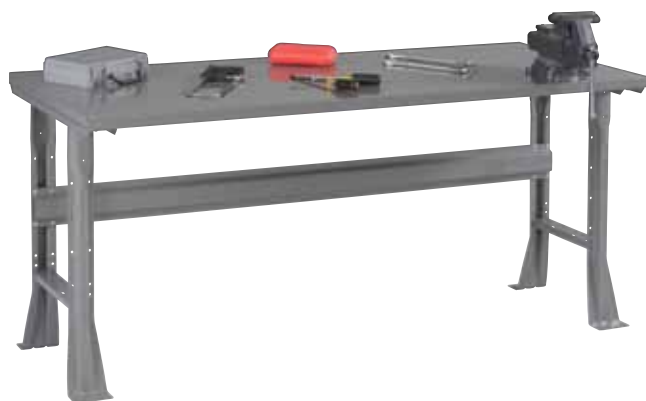
Cat No.	W	D	H	Wt.	List Price
<b>Electric Riser</b>					
RE-1045WK	45	11	11	23	<b>\$167.00</b>
<b>Push Handle Power Strip</b>					
MHE-25	-	25	-	11	<b>164.00</b>

# tennsco Workbenches: Steel, Solid Hard Wood, Compressed Wood & Plastic Laminate Tops

Tennsco Workbenches are constructed of only the finest materials. Choose from 12 gauge steel top with 14 gauge reinforcement channel at each end or solid hard wood top with “butcher block” construction sanded smooth.

### Please Note

Standard Colors: Light Grey, Medium Grey, Sand



### Steel Top Workbenches

- Assembly required.

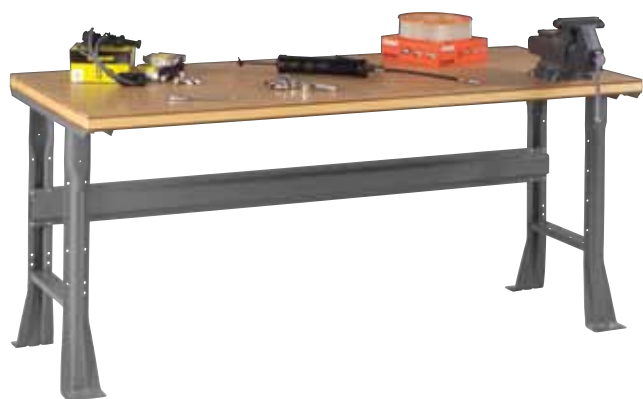
Cat. No.	W	D	H	Load Capacity	Wt.	List Price
<b>With Stringer &amp; Legs</b>						
WB-1-3048S	48	30	33 <sup>1</sup> / <sub>2</sub>	4000	91	\$ 307.00
WB-1-3060S	60	30	33 <sup>1</sup> / <sub>2</sub>	2500	103	325.00
WB-1-3072S	72	30	33 <sup>1</sup> / <sub>2</sub>	1800	120	362.00
WB-1-3096S	96	30	33 <sup>1</sup> / <sub>2</sub>	4000	144	519.00
WB-1-3660S	60	36	33 <sup>1</sup> / <sub>2</sub>	2500	122	379.00
WB-1-3672S	72	36	33 <sup>1</sup> / <sub>2</sub>	1800	134	405.00
WB-1-3696S	96	36	33 <sup>1</sup> / <sub>2</sub>	4000	160	569.00



### Solid Hard Wood Top Workbenches

- Assembly required.

Cat. No.	W	D	H	Load Capacity	Wt.	List Price
<b>With Stringer &amp; Legs</b>						
WB-1-3048W	48	30	33 <sup>3</sup> / <sub>4</sub>	4000	103	\$466.00
WB-1-3060W	60	30	33 <sup>3</sup> / <sub>4</sub>	3800	124	520.00
WB-1-3072W	72	30	33 <sup>3</sup> / <sub>4</sub>	3600	142	601.00
WB-1-3096W	96	30	33 <sup>3</sup> / <sub>4</sub>	4000	155	834.00
WB-1-3660W	60	36	33 <sup>3</sup> / <sub>4</sub>	3800	137	601.00
WB-1-3672W	72	36	33 <sup>3</sup> / <sub>4</sub>	3600	162	689.00
WB-1-3696W	96	36	33 <sup>3</sup> / <sub>4</sub>	4000	185	1,207.00



### Compressed Wood Top Workbenches

- Assembly required.

Cat. No.	W	D	H	Load Capacity	Wt.	List Price
<b>With Stringer &amp; Legs</b>						
WB-1-3048C	48	30	33 <sup>3</sup> / <sub>4</sub>	2400	110	\$ 398.00
WB-1-3060C	60	30	33 <sup>3</sup> / <sub>4</sub>	1900	152	425.00
WB-1-3072C	72	30	33 <sup>3</sup> / <sub>4</sub>	1500	175	485.00
WB-1-3096C	96	30	33 <sup>3</sup> / <sub>4</sub>	2400	199	693.00
WB-1-3660C	60	36	33 <sup>3</sup> / <sub>4</sub>	1900	169	485.00
WB-1-3672C	72	36	33 <sup>3</sup> / <sub>4</sub>	1500	206	542.00
WB-1-3696C	96	36	33 <sup>3</sup> / <sub>4</sub>	2400	238	803.00



### Plastic Laminate Top Workbenches

- Assembly required.

Cat. No.	W	D	H	Load Capacity	Wt.	List Price
<b>With Stringer &amp; Legs</b>						
WB-1-3048P	48	30	33 <sup>1</sup> / <sub>2</sub>	2400	112	\$388.00
WB-1-3060P	60	30	33 <sup>1</sup> / <sub>2</sub>	1900	123	411.00
WB-1-3072P	72	30	33 <sup>1</sup> / <sub>2</sub>	1500	139	466.00
WB-1-3096P	96	30	33 <sup>1</sup> / <sub>2</sub>	2400	161	663.00
WB-1-3660P	60	36	33 <sup>1</sup> / <sub>2</sub>	1900	150	493.00
WB-1-3672P	72	36	33 <sup>1</sup> / <sub>2</sub>	1500	182	542.00
WB-1-3696P	96	36	33 <sup>1</sup> / <sub>2</sub>	2400	193	760.00

National Motor Freight classification: Class 70

NOTE: Workbench accessories are located on pages 43-45.

# tennsco Workbenches: Adjustable Leg Workbenches

Tennsco *Adjustable Leg Workbenches* are constructed of only the finest materials. Choose from 12 gauge steel top with 14 gauge reinforcement channel at each end or solid hard wood top with “butcher block” construction sanded smooth.

### Please Note

Standard Colors: Light Grey,  
Medium Grey, Sand



## Steel Top Adjustable Leg Workbenches

(6 1/2" H adjust)

- Assembly required.

Cat. No.	W	D	H	Load Capacity	Wt.	List Price
WBA-1-3048S	48	30	33 1/2	4000	98	\$325.00
WBA-1-3060S	60	30	33 1/2	2500	110	343.00
WBA-1-3072S	72	30	33 1/2	1800	127	380.00
WBA-1-3096S	96	30	33 1/2	4000	147	546.00
WBA-1-3660S	60	36	33 1/2	2500	129	403.00
WBA-1-3672S	72	36	33 1/2	1800	141	429.00
WBA-1-3696S	96	36	33 1/2	4000	173	605.00

## Solid Hard Wood Top Adjustable Leg Workbenches

(6 1/2" H adjust)

- Assembly required.

Cat. No.	W	D	H	Load Capacity	Wt.	List Price
WBA-1-3048W	48	30	33 3/4	4000	109	\$484.00
WBA-1-3060W	60	30	33 3/4	3800	131	538.00
WBA-1-3072W	72	30	33 3/4	3600	148	619.00
WBA-1-3096W	96	30	33 3/4	4000	159	861.00
WBA-1-3660W	60	36	33 3/4	3800	144	625.00
WBA-1-3672W	72	36	33 3/4	3600	168	713.00
WBA-1-3696W	96	36	33 3/4	4000	188	1,243.00



## Compressed Wood Top Adjustable Leg Workbenches

(6 1/2" H adjust)

- Assembly required.

Cat. No.	W	D	H	Load Capacity	Wt.	List Price
WBA-1-3048C	48	30	33 3/4	2400	113	\$416.00
WBA-1-3060C	60	30	33 3/4	1900	159	443.00
WBA-1-3072C	72	30	33 3/4	1500	181	503.00
WBA-1-3096C	96	30	33 3/4	2400	203	693.00
WBA-1-3660C	60	36	33 3/4	1900	176	509.00
WBA-1-3672C	72	36	33 3/4	1500	212	566.00
WBA-1-3696C	96	36	33 3/4	2400	249	839.00

## Plastic Laminate Top Adjustable Leg Workbenches

(6 1/2" H adjust)

- Assembly required.

Cat. No.	W	D	H	Load Capacity	Wt.	List Price
WBA-1-3048P	48	30	33 1/2	2400	115	\$ 406.00
WBA-1-3060P	60	30	33 1/2	1900	130	429.00
WBA-1-3072P	72	30	33 1/2	1500	145	484.00
WBA-1-3096P	96	30	33 1/2	2400	165	690.00
WBA-1-3660P	60	36	33 1/2	1900	157	517.00
WBA-1-3672P	72	36	33 1/2	1500	188	566.00
WBA-1-3696P	96	36	33 1/2	2400	196	796.00

National Motor Freight classification: Class 70

NOTE: Workbench accessories are located on pages 43-45.

# tennsco Workbenches: Electronic Workbenches

Tennsco *Workbenches* are constructed of only the finest materials and represent the hallmark of strength and durability. And with a complete selection of optional add-on components, including side and back stops, risers, stackable drawers and lower shelves, these highly efficient units ensure maximum productivity in the workplace.

**Please Note**  
**Standard Colors:** Light Grey, Medium Grey, Sand



EB-1  
Solid Steel Top  
Electronic Workbench



EB-1  
Hard Wood Top  
Electronic Workbench



EB-1  
Compressed Wood Top  
Electronic Workbench



EB-1  
Plastic Laminate Top  
Electronic Workbench

## Electronic Workbenches

- Assembly required.

Cat. No.	Top Material	W	D	H	Load Capacity	Wt.	List Price
<b>Electronic Workbenches</b>							
EB-1-3072S	Solid Steel	72	30	33 <sup>1</sup> / <sub>2</sub>	1800	156	<b>\$526.00</b>
EB-1-3072M	Hard Wood	72	30	33 <sup>3</sup> / <sub>4</sub>	2000	178	<b>765.00</b>
EB-1-3672M	Hard Wood	72	36	33 <sup>3</sup> / <sub>4</sub>	2000	195	<b>849.00</b>
EB-1-3072P	Plastic Laminate	72	30	33 <sup>1</sup> / <sub>2</sub>	1500	175	<b>630.00</b>
EB-1-3672P	Plastic Laminate	72	36	33 <sup>1</sup> / <sub>2</sub>	1500	215	<b>702.00</b>
EB-1-3072C	Compressed Wood	72	30	33 <sup>3</sup> / <sub>4</sub>	1500	211	<b>649.00</b>
EB-1-3672C	Compressed Wood	72	36	33 <sup>3</sup> / <sub>4</sub>	1500	239	<b>702.00</b>

National Motor Freight classification: Class 70



# tennsco Electronic Modular Workbenches

Tennsco *Workbenches* are constructed of only the finest materials and represent the hallmark of strength and durability. And with a complete selection of optional add-on components, including side and back stops, risers, stackable drawers and lower shelves, these highly efficient units ensure maximum productivity in the workplace.

### Please Note

Standard Colors: Light Grey, Medium Grey, Sand



EMB-1  
Solid Steel Top  
Electronic Modular  
Workbench



EMB-2  
Solid Steel Top  
Electronic Modular  
Workbench

## Electronic Modular Workbenches

- Assembly required.

Cat. No.	Top Material	W	D	H	Load Capacity	Wt.	List Price
<b>Electronic Modular Workbenches</b>							
EMB-1-3072S	Solid Steel w/ 2 Drawer Units	72	30	33 <sup>1</sup> / <sub>2</sub>	1800	248	<b>\$1,311.00</b>
EMB-1-3072M	Hard Wood w/ 2 Drawer Units	72	30	33 <sup>1</sup> / <sub>2</sub>	2000	267	<b>1,542.00</b>
EMB-1-3072P	Plastic Laminate w/ 2 Drawer Units	72	30	33 <sup>1</sup> / <sub>2</sub>	1500	274	<b>1,437.00</b>
EMB-1-3072C	Compressed Wood w/ 2 Drawer Units	72	30	33 <sup>1</sup> / <sub>2</sub>	1500	300	<b>1,426.00</b>
EMB-2-3072S*	Solid Steel w/ 1 Drawer & 1 Cabinet	72	30	33 <sup>1</sup> / <sub>2</sub>	1800	224	<b>1,054.00</b>
EMB-2-3072M*	Hard Wood w/ 1 Drawer & 1 Cabinet	72	30	33 <sup>1</sup> / <sub>2</sub>	2000	243	<b>1,285.00</b>
EMB-2-3072P*	Plastic Laminate w/ 1 Drawer & 1 Cabinet	72	30	33 <sup>1</sup> / <sub>2</sub>	1500	250	<b>1,180.00</b>
EMB-2-3072C*	Compressed Wood w/ 1 Drawer & 1 Cabinet	72	30	33 <sup>1</sup> / <sub>2</sub>	1500	276	<b>1,169.00</b>

National Motor Freight classification: Class 85

NOTE: Workbench accessories are located on pages 16, 17 and 18

# tennsco Workbenches: Tops with Stringer

Tennsco *Workbenches* are constructed of only the finest materials and represent the hallmark of strength and durability. And with a complete selection of optional add-on components, including side and back stops, risers, stackable drawers and lower shelves, these highly efficient units ensure maximum productivity in the workplace.

### Please Note

Standard Colors: Light Grey, Medium Grey, Sand



### Workbench Tops (includes stringer)

Cat. No.	W	D	H	Load Capacity	Wt.	List Price
<b>Steel Top With Stringer**</b>						
T-3048	48	30	1 1/2	4000	62	<b>217.00</b>
T-3060	60	30	1 1/2	2500	74	<b>235.00</b>
T-3072	72	30	1 1/2	1800	91	<b>272.00</b>
T-3096*	96	30	1 1/2	4000	129	<b>384.00</b>
T-3648	48	36	1 1/2	4000	71	<b>240.00</b>
T-3660	60	36	1 1/2	2500	90	<b>285.00</b>
T-3672	72	36	1 1/2	1800	102	<b>311.00</b>
T-3696*	96	36	1 1/2	4000	144	<b>428.00</b>
<b>Steel Top With Hard Board**</b>						
THB-3048	48	30	1 1/2	4000	87	<b>\$296.00</b>
THB-3060	60	30	1 1/2	2500	96	<b>285.00</b>
THB-3072	72	30	1 1/2	1800	110	<b>324.00</b>
THB-3096	96	30	1 1/2	4000	144	<b>452.00</b>
THB-3648	48	36	1 1/2	4000	96	<b>295.00</b>
THB-3660	60	36	1 1/2	2500	114	<b>343.00</b>
THB-3672	72	36	1 1/2	1800	124	<b>374.00</b>
THB-3696	96	36	1 1/2	4000	163	<b>501.00</b>
<b>Hard Wood Top With Stringer</b>						
MT-3060	60	30	1 3/4	3800	95	<b>430.00</b>
MT-3072	72	30	1 3/4	3600	113	<b>511.00</b>
MT-3660	60	36	1 3/4	3800	105	<b>507.00</b>
MT-3672	72	36	1 3/4	3600	130	<b>595.00</b>
<b>Plastic Laminate Top With Stringer</b>						
PT-3060	60	30	1 1/2	1900	94	<b>321.00</b>
PT-3072	72	30	1 1/2	1500	110	<b>376.00</b>
PT-3660	60	36	1 1/2	1900	118	<b>399.00</b>
PT-3672	72	36	1 1/2	1500	150	<b>448.00</b>
<b>Compressed Wood Top With Stringer</b>						
CT-3060	60	30	1 3/4	1900	123	<b>335.00</b>
CT-3072	72	30	1 3/4	1500	146	<b>395.00</b>
CT-3660	60	36	1 3/4	1900	137	<b>391.00</b>
CT-3672	72	36	1 3/4	1500	174	<b>448.00</b>

\*Note: 96" tops require 3 legs.

\*\*Note: Includes four mounting channels

(enough to mount one workbench drawer or two modular cabinets.)

# tennsco Workbench Accessories

Tennsco *Workbenches* are constructed of only the finest materials and represent the hallmark of strength and durability. And with a complete selection of optional add-on components, including side and back stops, risers, stackable drawers and lower shelves, these highly efficient units insure maximum productivity in the workplace.

### Please Note

Standard Colors: Light Grey, Medium Grey, Sand



### Flared Leg

Cat. No.	W	D	H	Load Capacity	Wt.	List Price
L-2830	3 <sup>1</sup> / <sub>2</sub>	30	28	5000	14.5	<b>\$52.00</b>
L-2836	3 <sup>1</sup> / <sub>2</sub>	36	28	5000	15.5	<b>\$4.00</b>
L-3230	3 <sup>1</sup> / <sub>2</sub>	30	32	5000	14.5	<b>\$45.00</b>
L-3236	3 <sup>1</sup> / <sub>2</sub>	36	32	5000	16	<b>\$47.00</b>

Priced as each.

Load Capacity represents total per pair.



### Adjustable Leg

Cat. No.	W	D	H	Load Capacity	Wt.	List Price
AL-3230*	3	30	*	4000	17.8	<b>\$54.00</b>
AL-3236	3	36	*	4000	19.3	<b>\$9.00</b>

\* Height is adjustable from 27<sup>7</sup>/<sub>8</sub>" to 35<sup>5</sup>/<sub>8</sub>" on 1<sup>1</sup>/<sub>2</sub>" centers. Priced as each.

Load Capacity represents total per pair.



### Panel Legs

- Assembly required.

Cat. No.	W	D	H	Load Capacity	Wt.	List Price
LP-3230*	3 <sup>1</sup> / <sub>2</sub>	28	32	2000	48	<b>\$159.00</b>

Priced as pairs.

Load Capacity represents total per pair.

\*Requires WOP-72 (see page 45)



### Modular Storage Cabinet

Cat. No.	W	D	H	Load Capacity	Wt.	List Price
<b>Modular Storage Cabinet</b>						
MS-1524	15	24	32	1000	53	<b>\$253.00</b>
<b>Optional Second Shelf</b>						
MBS-1524	15	23	<sup>3</sup> / <sub>4</sub>	100	5	<b>\$4.00</b>



### Modular Drawer Cabinet

Cat. No.	W	D	H	Load Capacity	Wt.	List Price
<b>Modular Drawer Cabinet</b>						
MD-1524	15	24	32	1000	77	<b>\$507.00</b>
MD3-1524	15	24	32	1000	69	<b>\$492.00</b>
<b>Extra Divider*</b>						
WBDD-12	12 <sup>3</sup> / <sub>8</sub>	-	4 <sup>1</sup> / <sub>4</sub>		.6	<b>\$1.90</b>

MD-1524 has 4 box drawers and MD3-1524 has 2 box drawers and 1 file drawer

\*Note: Divider is galvanized, not painted.

# tennsco Workbench Accessories

Tennsco *Workbenches* are constructed of only the finest materials and represent the hallmark of strength and durability. And with a complete selection of optional add-on components, including side and back stops, risers, stackable drawers and lower shelves, these highly efficient units insure maximum productivity in the workplace.

### Please Note

Standard Colors: Light Grey, Medium Grey, Sand



### Side & Back Rail Kit

- Assembly required.

Cat. No.	W	D	H	Wt.	List Price
SB-3048	48	30	3	12.2	<b>\$43.00</b>
SB-3060	60	30	3	14	<b>49.00</b>
SB-3072	72	30	3	15.7	<b>52.00</b>
SB-3096	96	30	3	18.9	<b>67.00</b>
SB-3648	48	36	3	13.9	<b>48.00</b>
SB-3660	60	36	3	15.2	<b>52.00</b>
SB-3672	72	36	3	17	<b>54.00</b>
SB-3696	96	36	3	19.9	<b>69.00</b>



Shown with optional Cam Lock

### Stackable Drawer

Cat. No.	W	D	H	Load Capacity	Wt.	List Price
<b>Stackable Drawer</b>						
WBD-1MG*	15	18	8 <sup>1</sup> / <sub>4</sub>	70	18	<b>\$79.00</b>
WBD-1LMG**	15	18	8 <sup>1</sup> / <sub>4</sub>	70	20	<b>84.00</b>
WBD-1	15	18	8 <sup>1</sup> / <sub>4</sub>	70	18	<b>130.00</b>
<b>Cam Lock (Field Installable)</b>						
CL-1	-	-	-	-	.1	<b>5.10</b>
<b>Extra Drawer Divider</b>						
WBDD-12	12 <sup>3</sup> / <sub>8</sub>	-	4 <sup>1</sup> / <sub>4</sub>	-	.6	<b>1.90</b>

\* Medium grey only.

\*\* Medium grey only with cam lock.



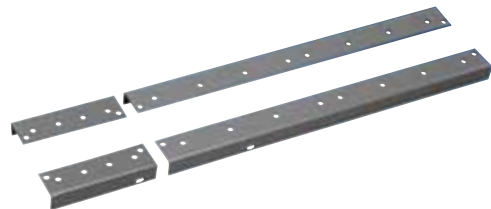
### Lower Shelf For Units With Open Bench Legs

Cat. No.	W	D	H	Load Capacity	Wt.	List Price
S-48	48	14	-	450	15.5	<b>\$55.00</b>
S-60	60	14	-	450	19.5	<b>65.00</b>
S-72	72	14	-	350	23	<b>75.00</b>
S-96	96	14	-	850	31	<b>96.00</b>



### Forman's Desk Drawer

Cat. No.	W	D	H	Load Capacity	Wt.	List Price
WBD-25	25	22	6	70	17	<b>\$183.00</b>



### Mounting Angles

Cat. No.	W	D	H	Wt.	List Price
WBLB-30	1 <sup>7</sup> / <sub>8</sub>	22	1 <sup>1</sup> / <sub>16</sub>	3.4	<b>\$11.95</b>

# tennsco Workbench Accessories

Tennsco *Workbenches* are constructed of only the finest materials and represent the hallmark of strength and durability. And with a complete selection of optional add-on components, including side and back stops, risers, stackable drawers and lower shelves, outlet panels and wiring kits, these highly efficient units insure maximum productivity in the workplace.

### Please Note

Standard Colors: Light Grey, Medium Grey, Sand



### Caster Kits

- Assembly required.

Cat. No.	W	D	H	Load Capacity	Wt.	List Price
WBCK-24*	Fits 24"d Legs			1000	13.8	<b>\$101.00</b>
WBCK-3036*	Fits 30" & 36"d Legs			1000	16	<b>87.00</b>
WBCK-3036S**	Fits 30" & 36"d Legs			1000	16	<b>88.00</b>

\* Two fixed and two swivel

\*\* All swivel



### Workbench Riser With End Supports

- Assembly required.

Cat. No.	W	D	H	Load Capacity	Wt.	List Price
R-1048	48	10 <sup>1</sup> / <sub>2</sub>	12	600	18.5	<b>\$76.00</b>
R-1060	60	10 <sup>1</sup> / <sub>2</sub>	12	450	21	<b>80.00</b>
R-1072	72	10 <sup>1</sup> / <sub>2</sub>	12	350	24	<b>88.00</b>
R-1096	96	10 <sup>1</sup> / <sub>2</sub>	12	1000	32	<b>136.00</b>
R-106018	60	10 <sup>1</sup> / <sub>2</sub>	18	450	24	<b>89.00</b>
R-107218	72	10 <sup>1</sup> / <sub>2</sub>	18	350	27	<b>98.00</b>



### Lower Shelf For Modular Units With 72" w Tops

Cat. No.	W	D	H	Load Capacity	Wt.	List Price
SM-42	42	14	1 <sup>1</sup> / <sub>2</sub>	250	14.4	<b>\$53.00</b>



### Full Depth Lower Shelf

Cat. No.	W	D	H	Load Capacity	Wt.	List Price
FS-48	48	20	-	450	15.5	<b>\$96.00</b>
FS-60	60	20	-	450	19.5	<b>120.00</b>
FS-72	72	20	-	350	23.0	<b>139.00</b>
FS-96	96	20	-	850	31.0	<b>186.00</b>



### Electronic Riser With End Supports

- Assembly required.

Cat. No.	W	D	H	Load Capacity	Wt.	List Price
RE-1060	60	10 <sup>1</sup> / <sub>2</sub>	12	450	27	<b>\$106.00</b>
RE-1072	72	10 <sup>1</sup> / <sub>2</sub>	12	350	31	<b>115.00</b>
RE-1560	60	15	12	450	35	<b>129.00</b>
RE-1572	72	15	12	350	39	<b>140.00</b>
RE-18-1560	60	15	18	450	38	<b>140.00</b>
RE-18-1572	72	15	18	350	43	<b>151.00</b>
RE-18-1596	96	15	18	300	53	<b>192.00</b>

Note: \*Wiring kit sold separately.

\*Shown on page 22.

# tennsco Workbench Accessories

Tennsco *Workbenches* are constructed of only the finest materials and represent the hallmark of strength and durability. And with a complete selection of optional add-on components, including side and back stops, risers, stackable drawers and lower shelves, these highly efficient units insure maximum productivity in the workplace.

### Please Note

Standard Colors: Light Grey, Medium Grey, Sand



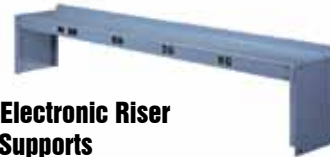
### Electronic Outlet Panel For 72" Benches With Panel Legs

- Assembly required.

Cat. No.	W	D	H	Wt.	List Price
WOP-72	71 <sup>5</sup> / <sub>8</sub>	3	4 <sup>3</sup> / <sub>8</sub>	17.4	<b>\$95.00</b>

Note: Wiring kit sold separately.

Includes front and rear panels.



### Prewired Electronic Riser With End Supports

- Assembly required.

Cat. No.	W	D	H	Load Capacity	Wt.	List Price
REI-1060-WK-1	60	10 <sup>1</sup> / <sub>2</sub>	12	450	30	<b>\$285.00</b>
REI-1072-WK-1	72	10 <sup>1</sup> / <sub>2</sub>	12	350	34	<b>\$293.00</b>
REI-1560-WK-1	60	15	12	450	47	<b>\$308.00</b>
REI-1572-WK-1	72	15	12	350	53	<b>\$320.00</b>
REI-18-1560-WK-1	60	15	18	450	54	<b>\$316.00</b>
REI-18-1572-WK-1	72	15	18	350	60	<b>\$330.00</b>
REI-18-1596-WK-1	96	15	18	300	72	<b>\$375.00</b>



### Service Cart

- Assembly required. Shown with optional center tray.

Cat. No.	W	D	H	Wt.	List Price
<b>16" Wide Cart</b>					
SC-1630	16	30	32	36	<b>\$162.00</b>
<b>Optional Center Tray for 16" Wide Cart</b>					
ST-16	16	30	3 <sup>1</sup> / <sub>4</sub>	11	<b>\$49.00</b>
<b>24" Wide Cart</b>					
SC-2436	24	36	32	51	<b>\$196.00</b>
<b>Optional Center Tray for 24" Wide Cart</b>					
ST-24	24	36	3 <sup>1</sup> / <sub>4</sub>	15.8	<b>\$61.00</b>



### Electronic Outlet Panel For 72" Benches With Two Modular Units

- Assembly required.

Cat. No.	W	D	H	Wt.	List Price
WOP-42	42	3 <sup>3</sup> / <sub>8</sub>	4 <sup>3</sup> / <sub>8</sub>	10.3	<b>\$41.00</b>

Note: Wiring kit sold separately.



### Wiring Kit

- Assembly required.

Cat. No.	W	D	H	Wt.	List Price
WK-1	-	-	-	2.5	<b>\$104.00</b>

# tennsco Technical Workstations

Tennsco *Technical Workstations* are easily configured to meet any technical application and offer you everything you need for an optimized, productive and safe work environment. Heavy-duty work surfaces and optional static-control surfaces are designed to handle the toughest assignments. *Power Rails* provide convenient desktop access to power receptacles. The optional *Instrument Shelf* is designed to provide more work space while complementing the design and function of the *Technical Workstation*. Additional *Hanging Drawer Units* allow for convenient storage of small items.

### Please Note

Standard Colors: Sand, Accent Blue



Shown with optional instrument shelf.



## Technical Workstations with Power Rail & Fixed Legs

- Assembly required.

Cat. No.	W	D	H	Wt.	List Price
<b>Standard Work Surface</b>					
TW-603030-NE	60	30	30	124	\$884.00
TW-603034-NE	60	30	34	127	892.00
TW-603630-NE	60	36	30	130	969.00
TW-603634-NE	60	36	34	134	977.00
TW-723030-NE	72	30	30	137	959.00
TW-723034-NE	72	30	34	140	967.00
TW-723630-NE	72	36	30	157	1,049.00
TW-723634-NE	72	36	34	161	1,057.00
TW-963030-NE	96	30	30	168	1,130.00
TW-963034-NE	96	30	34	171	1,138.00
TW-963630-NE	96	36	30	188	1,252.00
TW-963634-NE	96	36	34	192	1,260.00
<b>Static Control Work Surface</b>					
TW-603030-SE	60	30	30	124	1,157.00
TW-603034-SE	60	30	34	127	1,165.00
TW-603630-SE	60	36	30	130	1,178.00
TW-603634-SE	60	36	34	134	1,186.00
TW-723030-SE	72	30	30	137	1,228.00
TW-723034-SE	72	30	34	140	1,236.00
TW-723630-SE	72	36	30	157	1,263.00
TW-723634-SE	72	36	34	161	1,271.00
TW-963030-SE	96	30	30	168	1,276.00
TW-963034-SE	96	30	34	171	1,284.00
TW-963630-SE	96	36	30	188	1,405.00
TW-963634-SE	96	36	34	192	1,413.00

## Instrument Shelf

- Assembly required.

Cat. No.	W	D	H	Wt.	List Price
<b>Standard Work Surface</b>					
TWI-60-N	60	15	18	61	\$425.00
TWI-72-N	72	15	18	69	495.00
TWI-96-N	96	15	18	87	568.00
<b>Static Control Work Surface</b>					
TWI-60-S	60	15	18	61	527.00
TWI-72-S	72	15	18	69	581.00
TWI-96-S	96	15	18	87	652.00
<b>Standard Work Surface with Power Rail</b>					
TWI-60-NE	60	15	18	64	606.00
TWI-72-NE	72	15	18	74	684.00
TWI-96-NE	96	15	18	93	758.00
<b>Static Control Work Surface with Power Rail</b>					
TWI-60-SE	60	15	18	64	708.00
TWI-72-SE	72	15	18	74	770.00
TWI-96-SE	96	15	18	93	842.00

## Hanging Drawer Units

- Assembly required.

Cat. No.	W	D	H	Wt.	List Price
<b>Fits 30" Deep Technical Workstation</b>					
PED-10-30	15	24	9	39	\$361.00
PED-20-30	15	24	20 <sup>3</sup> / <sub>4</sub>	66	503.00
PED-30-30	15	24	20 <sup>3</sup> / <sub>4</sub>	76	584.00
<b>Fits 36" Deep Technical Workstation</b>					
PED-10-36	15	24	9	39	365.00
PED-20-36	15	24	20 <sup>3</sup> / <sub>4</sub>	66	507.00
PED-30-36	15	24	20 <sup>3</sup> / <sub>4</sub>	76	588.00

## Workstation Top

Cat. No.	W	D	H	Wt.	List Price
TWST-4830	48	30	1	47	\$282.00

National Motor Freight classification: Class 70



**tennsco**

**SYSTEMS FOR SUCCESS**

*Mailing Address:*

P.O. Box 1888

Dickson, TN 37056-1888

*Shipping Address:*

201 Tennsco Drive

Dickson, TN 37055

Toll Free Customer Service: (866) 446-8686 • Fax (866) 445-7260

Toll Free Ordering: (866) 864-4796

(615) 446-8000 • (800) 251-8184 • Fax (800) 722-0134

[www.tennsco.com](http://www.tennsco.com) • [info@tennsco.com](mailto:info@tennsco.com)